

PEOPLE

Jeremy WOLVERIDGE of Wolveridge Architects

Wolveridge Architects' sensitive approach to its residential projects has resulted in a series of elegant and beautifully detailed homes.

Words by Mark Scruby
Photography by Derek Swalwell



Portrait: Peter Bennetts.

Homecomings are often characterized as a return to the safe and familiar but for Melbourne-born architect Jeremy Wolveridge (known as “Jerry” to most), it was quite the opposite. In 2000, after three years’ working in Far North Queensland and two in London, Jerry was ready to set up his own practice. He wanted to do it in a place that would throw up new challenges and provide ongoing opportunity for truly creative design. Track forward to 2014 and his busy Collingwood studio and impressive folio of completed work attest to a decade and a half spent tackling those challenges and grasping those opportunities. Consider the five projects featured here as a representative sample: an inner-city alt-and-add (as you’d expect), homes for a growing family (on Victoria’s Mornington Peninsula) and a couple (in an estate adjacent to a golf course), an expansive luxury beach getaway (behind the dunes at Queensland’s Port Douglas), and a converted horse knackery in the Gippsland bush in rural Victoria (really!).

Through this diversity a signature style emerges. There’s a feeling of elegance and luxury achieved through attention to detail rather than embellishment; honest textures of timber and concrete predominate but are juxtaposed with marble and porcelain tile and feature mirrored surfaces; and, probably a product of the years spent in Queensland, indoor and outdoor spaces are integrated masterfully.

The most recent project here, the Northcote Residence, exhibits all of these elements. The clients had seen Jerry’s own house, a fantastic timber pavilion in bushland north of Melbourne, and asked if its particular contemporary/rustic materiality could be translated to an inner-urban context – specifically, to replace the dodgy 1970s addition to their block-fronted weatherboard home. The most explicit links to Jerry’s house are the timber exterior and an internal wall clad in recycled timber that marks the transition from the original building, but the two projects are also connected more subtly – fundamentally – through the mix of materials used. In the centre of the raw

- 01 At the Northcote Residence, red bricks salvaged on site now pave a path that extends the old house’s hallway.
- 02 The juxtaposition of honest timber and brick with the luxury of glossy tiles and marble amplifies the effect of each element at the Northcote Residence.
- 03 The rustic materiality of the architect’s own bushland house has been translated to an inner-urban context at the Northcote Residence.



01

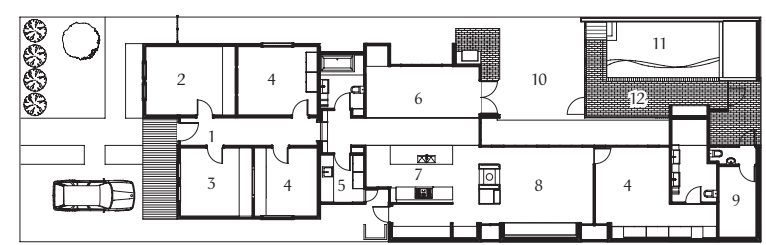


2013
Northcote RESIDENCE
• MELBOURNE, VIC •

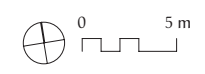
02



Northcote Residence section 1:400



Northcote Residence plan 1:400



- 1 Entry
- 2 Rumpus
- 3 Study
- 4 Bedroom
- 5 Laundry
- 6 Dining
- 7 Kitchen
- 8 Living
- 9 Store
- 10 Terrace
- 11 Pool
- 12 Pool terrace

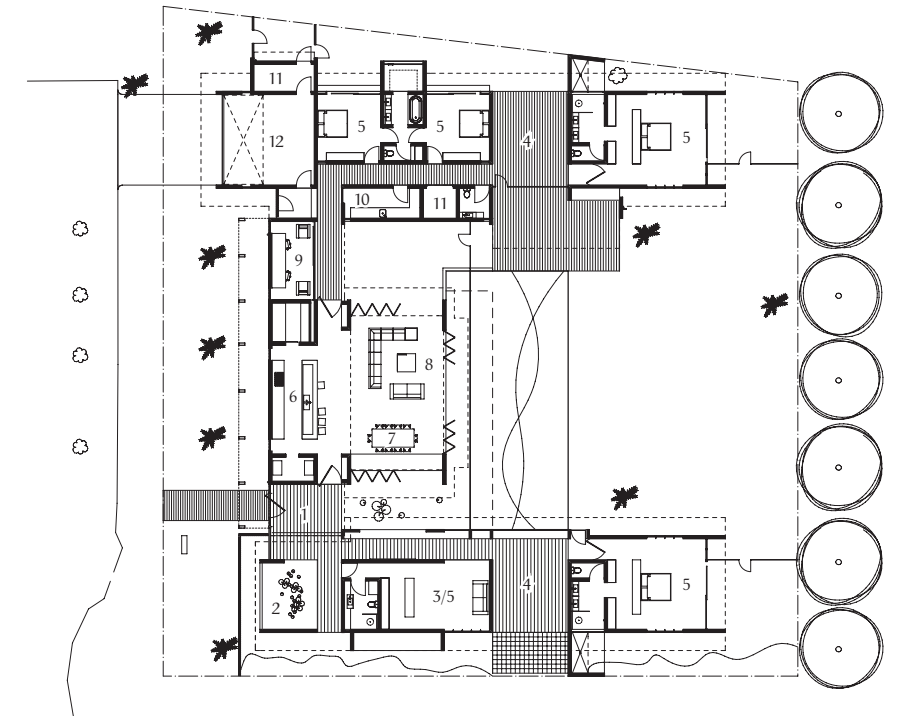
2004
The NAK
• GIPPSLAND, VIC •



04 An idyllic bush retreat, The Nak has been crafted from an old equine slaughterhouse. Photograph: Albert Comper.

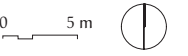
05 At The Nak, existing masonry walls have been retained, with apertures increased to allow more natural light in. Photograph: Albert Comper.

2010
Dune HOUSE
• PORT DOUGLAS, QLD •



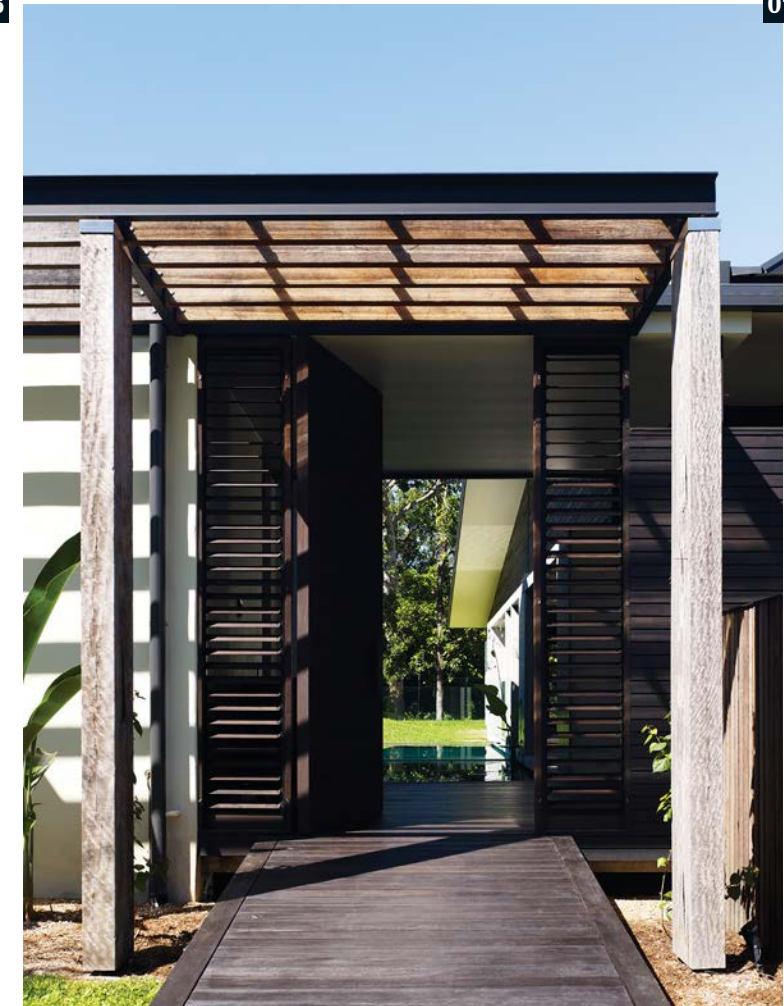
- 1 Entry
- 2 Pond
- 3 TV room
- 4 Open lounge
- 5 Bedroom
- 6 Kitchen
- 7 Dining
- 8 Living
- 9 Study
- 10 Laundry
- 11 Store
- 12 Garage

Dune House plan 1:500



06 The lightness of Dune House's gently pitched roof tempers the home's masculine appearance.

07 The dark exterior of the Dune House is continued inside.



timber wall, for example, the doorway is given a high-gloss paint finish; and red bricks, salvaged on site, pave a laneway that extends the old house's central hallway right past a luxe marble-topped kitchen bench. In the bathroom, the same red bricks are played off against a wall of pure white tiles in gloss and matte finishes.

Rusticity in residential architecture too often feels like imitation, but in Jerry's hands, recycled materials and textured treatments are given a role to play in an unmistakably modern context. At the Northcote Residence, the juxtaposition of honest timber and brick with the unabashed luxury of glossy tiles and polished marble amplifies the effect of each element. So, while this inner-city alt-and-add and Jerry's rural home are two very different buildings, they share a character and texture that's distinctly Wolveridge Architects.

If the Northcote extension made good use of materials found on site, the same can also be said for a much earlier project – The

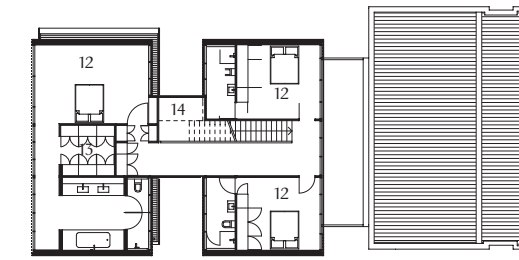
Nak, a repurposed equine slaughterhouse. From a utilitarian found object, Jerry and his team crafted an idyllic bush retreat. The existing masonry walls were retained, with apertures increased to bring in more natural light and open up views to the surrounding eucalypt forest, and the building was expanded with the addition of a large silvertop-ash-clad box. Polished floorboards, stained plywood wall cladding and new fittings elevate the interior from vintage industrial to modern residential, and the central gutter in the graded concrete slab of the old knackery is filled in with a new timber tray, leaving a very subtle reminder of the building's macabre history.

At the other end of the continent – and the other end of the spectrum, in terms of scale – is the Dune House, a luxury home on the beach at Port Douglas. It's something of a showcase for Jerry's knowledge of tropical architecture. Indoor and outdoor spaces flow into each

other almost seamlessly and the careful programming of rooms, courtyards and gardens creates a network of secluded, private zones and public social spaces. The building expresses a masculine attitude, with heavy masonry walls and deep columns, but this is tempered by the lightness of its gently pitched roof. Detailing doesn't telegraph luxury through baroque ornamentation but evokes it through meticulous attention to every facet of design, from the elemental black Japanned island bench in the kitchen, to the recessed junctions between walls and ceiling.

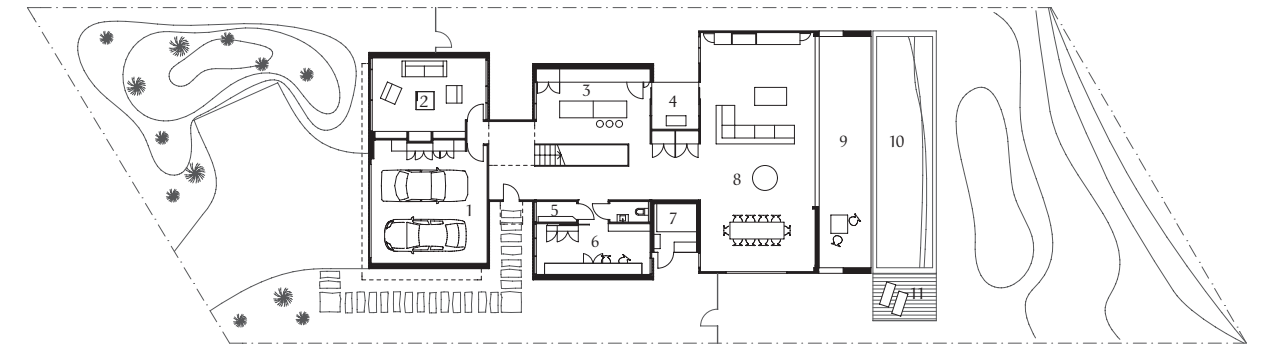
Back down in Victoria, the Torquay House explores ideas of luxury, privacy and coastal living in different ways. Set amidst a development on a golf course, the house has been designed to edit out its less desirable outlooks – the neighbouring houses – and instead focus occupants' attentions on lush fairways and rolling dunes. Despite the imposing concrete

08 At Torquay House the battened facade can be opened up, allowing occupants to control how much they engage with the outside world.

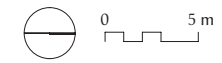


Torquay House first floor 1:400

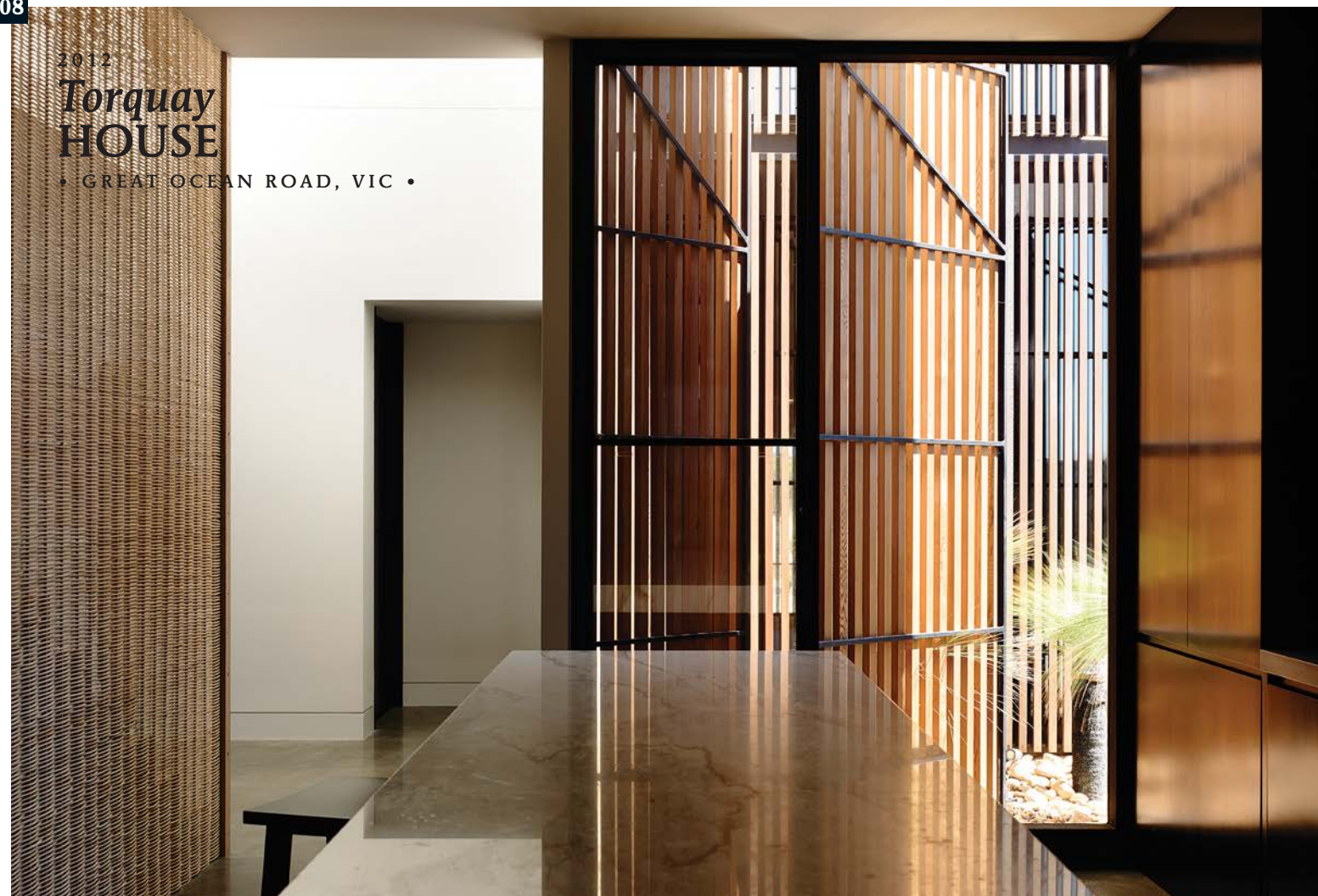
- | | |
|---------------|-----------------|
| 1 Garage | 8 Living/dining |
| 2 Winter room | 9 Terrace |
| 3 Kitchen | 10 Pool |
| 4 Barbecue | 11 Deck |
| 5 Store | 12 Bedroom |
| 6 Study | 13 Walk-in robe |
| 7 Plant | 14 Void |



Torquay House ground floor 1:400



08



2012
Torquay House
• GREAT OCEAN ROAD, VIC •

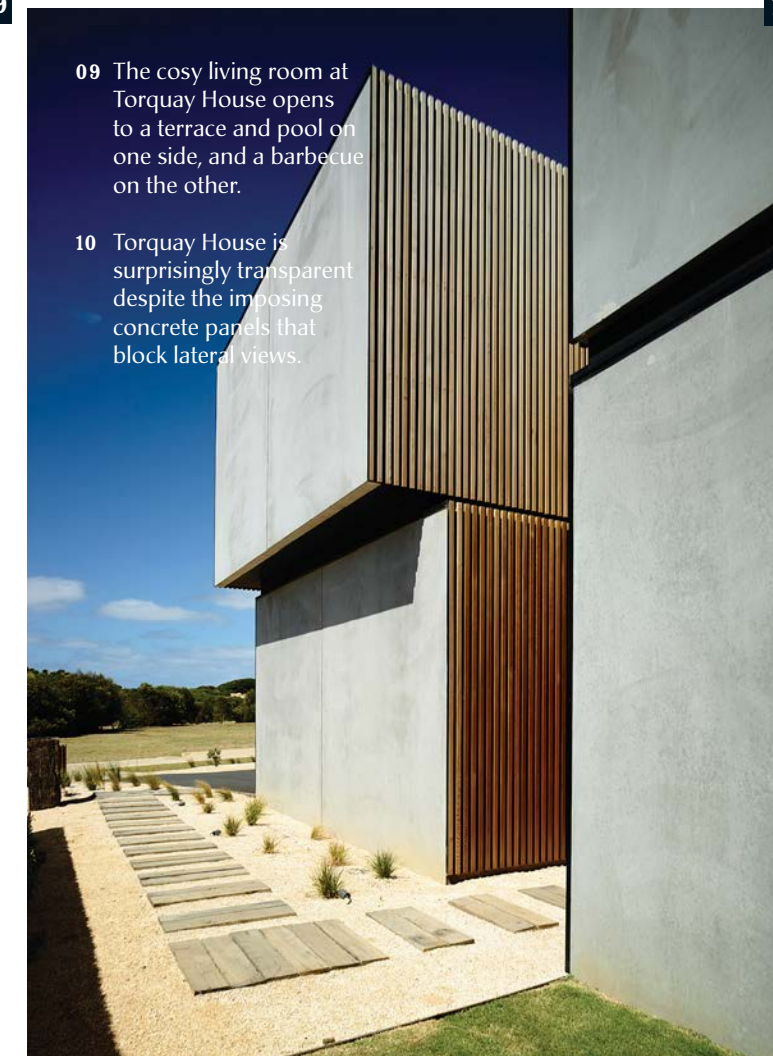
09



09 The cosy living room at Torquay House opens to a terrace and pool on one side, and a barbecue on the other.

10 Torquay House is surprisingly transparent despite the imposing concrete panels that block lateral views.

10



panels that block the lateral views, the house is surprisingly transparent: glass walls and wide apertures open up internal sight lines through adjacent rooms, and to the outdoors; roof windows and light wells channel bright natural light; and the battened facade can be opened up, giving the occupants complete control over their level of engagement with the outside world.

On the other side of Port Phillip Bay, at Blairgowrie, an extensive renovation of a family home also uses clever facade design to control light and views. With three young kids' bedrooms facing out to the street from the western facade, mitigation of scorching summer sun was paramount. A geometrical array of windows was designed, with deep trims to shade the interior. The small windows, like square portholes, make for a fun street elevation and, inside, bring a sense of adventure to

the kids' bedrooms. Further into the house, a large north-facing balcony provides a protected outdoor space suitable for use in all seasons and most weather.

Like the Dune House, or the golfer's paradise at Torquay, there's a strong sense of openness and permeability here. The view from the kitchen, for example, takes in the balcony and the kids' rooms in one direction, while in the other, a splashback window frames mature trees on the neighbouring property.

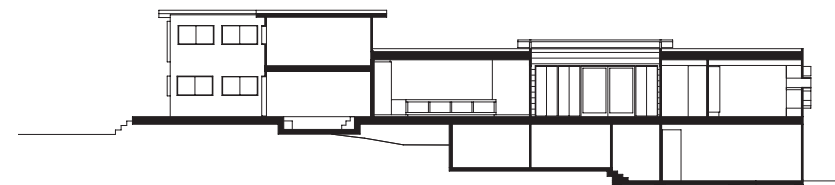
This openness, the elegant minimalism, the specific approach to materiality, flow through all of Wolveridge Architects' work. These houses are the products of an incredibly considered approach to residential architecture, one that delivers beautiful places for living by the beach, in the city, in the bush, anywhere. wolveridge.com.au



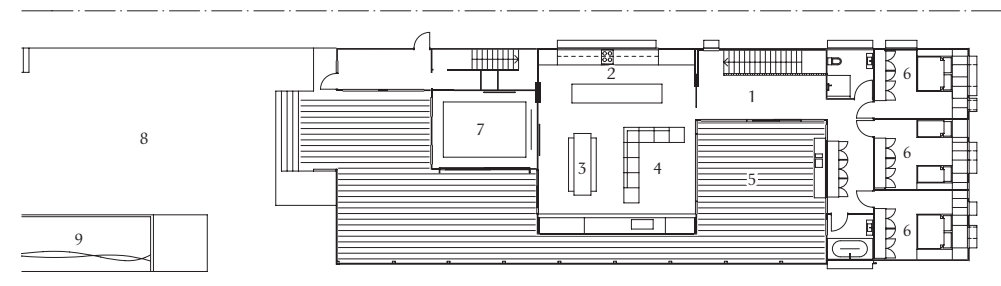
2012

Blairgowrie Beach HOUSE

• MORNINGTON PENINSULA, VIC •



Blairgowrie Beach House section 1:400



- 1 Play area
- 2 Kitchen
- 3 Dining
- 4 Living
- 5 Courtyard
- 6 Bedroom
- 7 Sunken lounge
- 8 Lawn
- 9 Pool

Blairgowrie Beach House first floor 1:400



12

11 Director Jeremy Wolveridge, who founded the practice in 2000 after working in London and Far North Queensland. Photograph: Peter Bennetts.

12 The Wolveridge Architects' team in their office in Collingwood, Melbourne. Photograph of Torquay House (on left wall) by Derek Swalwell. Artwork: Guz, *Love me or Else*, 2006. Photograph: Peter Bennetts.



13

13 A geometric array of windows makes for a fun street elevation at the Blairgowrie House. Photograph: Ben Hosking.

14 The windows on the western facade of the Blairgowrie House feature deep trims to shade the children's bedrooms from the hot sun. Photograph: Ben Hosking.



14



OUR PALETTE

• MATERIALS & FINISHES •

The use of recycled and rustic materials in juxtaposition with luxurious and glossy textures is a signature approach taken by Wolveridge Architects. Here, the team shares some favourites from its material palette.



01
Spotted gum cladding

Spotted gum is suitable to use as a cladding in extreme conditions, such as the coastal setting of the Torquay House, pictured here. This material can either be preserved, or left to age and turn silver. woodformarchitectural.com.au



02
Recycled bricks

Wolveridge Architects often incorporates second-hand bricks when working on projects where a heritage connection is appropriate, as seen here in the bathroom of the Northcote Residence.

03

Concrete

Wolveridge Architects uses concrete for its thermal qualities and extreme durability. Concrete's neutral appearance allows it to be used in a broad range of applications, including flooring, as seen here at the Torquay House.

03



04

Ghiaccio tiles from Classic Ceramics

Tiles are cost effective and can be used to create durable surfaces suitable for a range of applications. Wolveridge Architects often uses a mixture of gloss and matt tiles to add texture to walls. classicceramics.com.au

04



05



05

Hot-rolled mild steel sheet

Wolveridge Architects uses steel or aluminium to evoke an industrial aesthetic. The materials also contribute to the robustness of a project and emphasizes the practice's customized approach to detailing, as seen here in the bathroom of the Northcote Residence. directsteel.com.au

06



06

Plywood

Quality, Australian-made plywood is a cost-effective and durable material for interior linings or joinery, as seen here in a bedroom of the Blairgowrie Beach House. Wolveridge Architects finds this material easy to work with and likes the fact that it can be effectively pre-finished. plyco.com.au

Photography:
Derek Swalwell 01, 02, 03, 04, 05
Ben Hosking 06